

TREBLE R FABRICATIONS

UNIT 42 – CROSSGATE ROAD – PARK FARM INDUSTRIAL ESTATE – REDDITCH – WORCS – B987SN

tel 01527 503 303 – fax 01527 503 325 – web www.treblefabrications.co.uk

SADOV's

Swivel Arm Draw Off Valves

For use on sewage treatment plants, for draining off water level on tanks using a handwheel and spindle to control the position of draw-off.

Generally supplied in painted mild steel complete with swivel body, trunnion bracket, sole plate, swivel seats, trunnion pin.
Grade 303SS spindle and PMS Arm. Spindle protected via clear polycarbonate protection tube.



SWIVEL ARM DRAW OFF

SWIVEL BENDS / DECANTING ARMS

Application : Isolation / Draw off of Media in Chambers

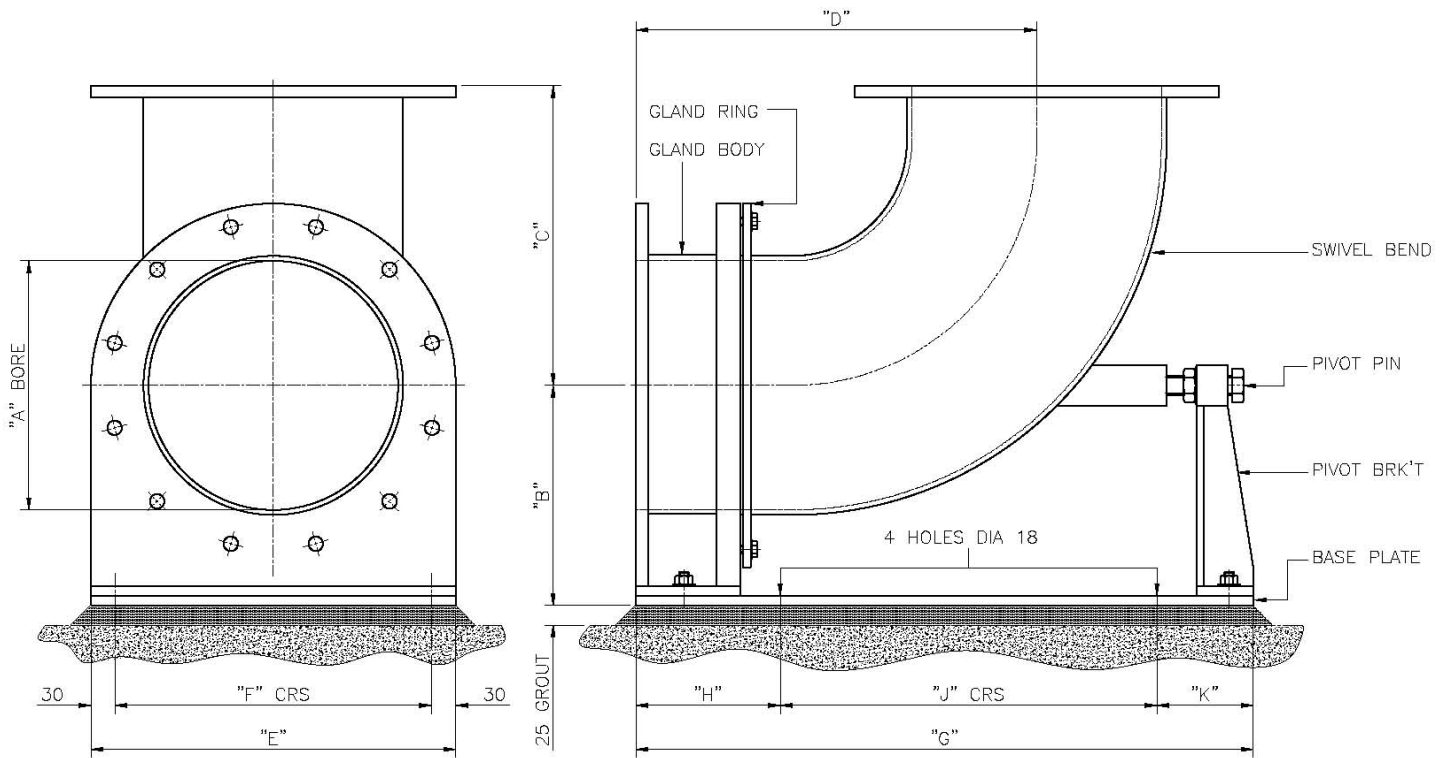
Type of Mounting : PN16 / NP10 Pipe Flange Mounting

Options : Operation Via Handwheel
Gearbox + Handwheel
Electrical Actuator
Hand Chain

Construction Materials

Item	Description	Materials
1	Gland Body	MS, 304ss, 316ss
2	Gland Ring	MS, 304ss, 316ss
3	Swivel Bend	MS, 304ss, 316ss
4	Pivot Bracket	MS, 304ss, 316ss
5	Pivot Pin	MS, 304ss, 316ss
6	Seal	Rope
7	Sole Plate	MS, 304ss, 316ss

FLOATING ARM DRAW-OFF VALVES SWIVEL BEND DIMENSIONAL DETAILS

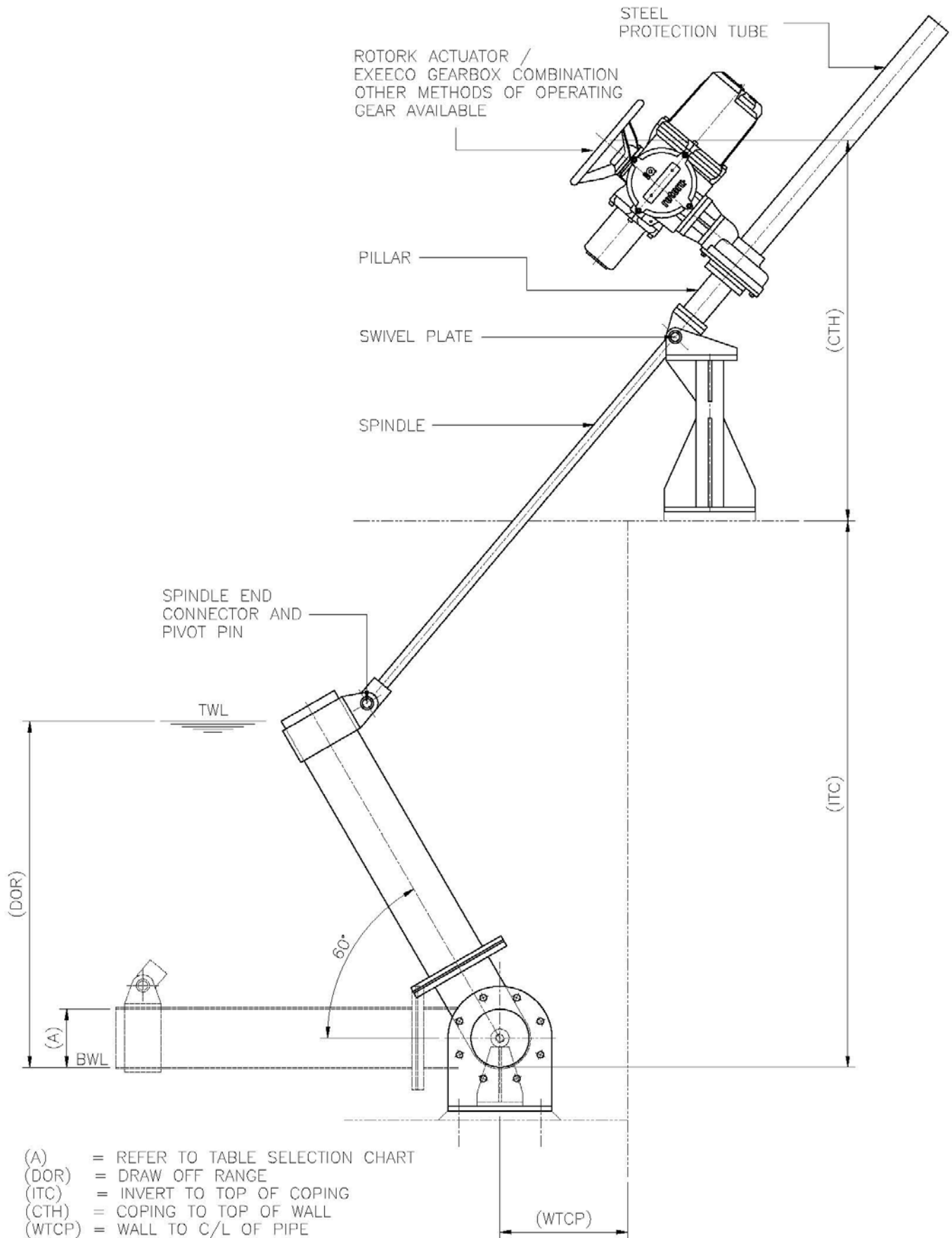


SWIVEL BEND ASSEMBLY – DIMENSIONS TABLE

NOMINAL BORE	A	B	C	D	E	F	G	H	J	K
100mm	100	175	175	300	220	160	510	180	210	120
150mm	150	200	225	350	285	225	545	180	245	120
200mm	200	225	275	400	340	280	620	180	320	120
250mm	250	250	325	450	400	340	695	180	395	120
300mm	300	275	375	500	455	395	770	180	470	120

SADOV

SWIVEL ARM DRAW-OFF VALVE



- (A) = REFER TO TABLE SELECTION CHART
- (DOR) = DRAW OFF RANGE
- (ITC) = INVERT TO TOP OF COPING
- (CTH) = COPING TO TOP OF WALL
- (WTCP) = WALL TO C/L OF PIPE