

# TREBLE R FABRICATIONS

UNIT 42 • CROSSGATE ROAD • PARK FARM INDUSTRIAL ESTATE • REDDITCH • WORCS • B98 7SN

t 01527 503 303 • f 01527 503 325 • w [www.treblefabrications.co.uk](http://www.treblefabrications.co.uk)

## WALL MOUNTING HANDSTOPS

Handstops are lightweight, corrosion resistant generally for water and sewage systems isolating duties.

Handstops are designed and manufactured to suit modern industrial and domestic effluent environments.

Utilising the latest synthetic materials combined with the use of steel or stainless steel provides a range of handstops suitable for use in most water, sewage and effluent treatment plants.

The handstops are available in sizes ranging from 100mm in width & depth up to 850mm in width and depth incrementing by 1mm as standard.

Larger sizes are available but weight and lifting effort should be considered.

### FEATURES:

- Corrosion resistance
- Lightweight
- Ease of operation
- Choice of frame material
- Renewable seals
- Low maintenance
- Custom built to customers requirements



# WALL MOUNTING HANDSTOPS

## **Handstops – Wall**

### **Operating Duty**

Application:	Flow control and isolation
Type of Mounting:	Wall sides, wall/rebate invert
Type of Media:	Water and Sewage
Operating Head:	6 Metres on-seating

### **Options**

Mounting:	Side wall mounted in channel
Operation:	Lifting handle(s) or handhole(s)
Size Range:	Any size from 100mm to 850mm in square or rectangular format

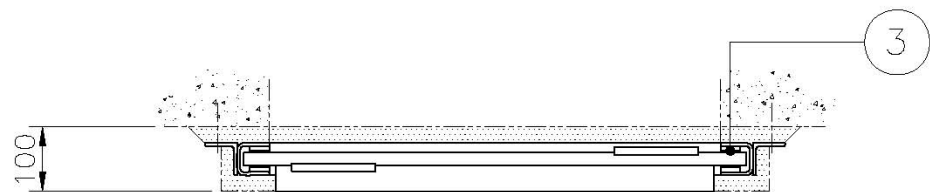
### **Applicable Standards**

BS 7775: 1995, Specification for general  
purpose penstocks

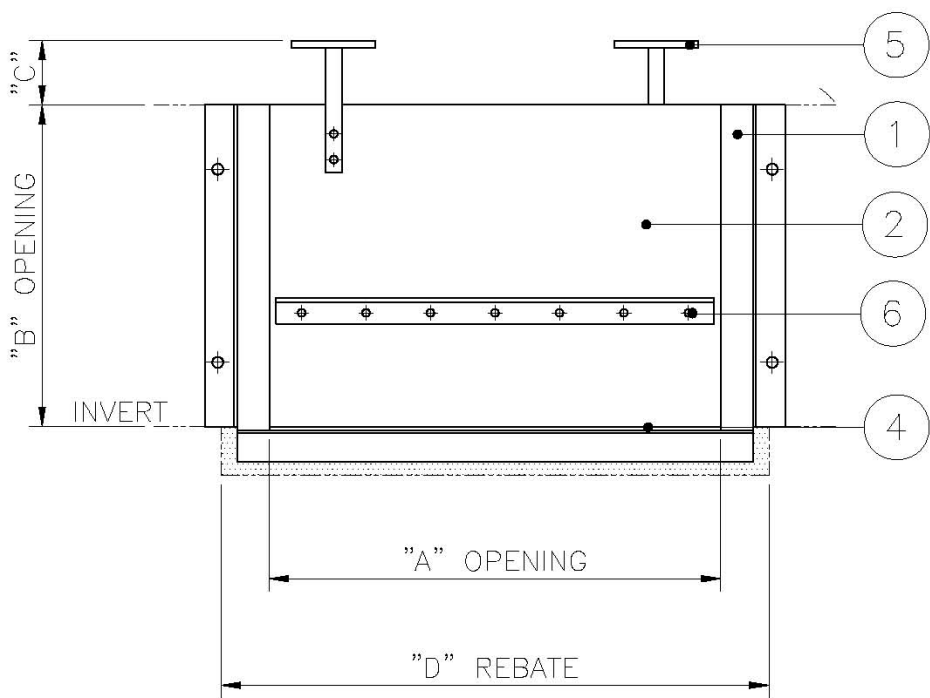
### **Construction Materials**

<b>ITEM</b>	<b>DESCRIPTION</b>	<b>MATERIAL</b>
1	Frame	Mild Steel, BS 4360 Gr 43A Stainless Steel, BS 970 Gr 304 Stainless Steel, BS 970 Gr 316
2	Door	HMWP with Reinforcement
3	Side Seals	Low Friction Polyolefin
4	Invert Seal	Neoprene
5	Stem	Stainless Steel, BS 970 Gr 304 Stainless Steel, BS 970 Gr 316
6	Fasteners	Stainless Steel, BS 6105, Gr A4

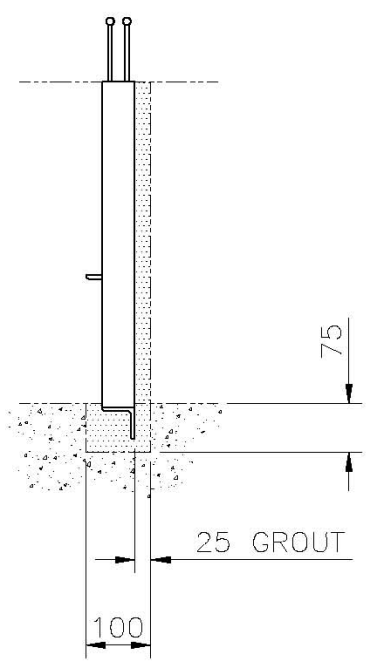
**Wall Mounting Handstops**  
**Dimensions**



PLAN VIEW



FRONT ELEVATION



SIDE ELEVATION

## **Wall Mounting Handstops**

<b>A</b>	<b>OPENING WIDTH</b>
<b>B</b>	<b>OPENING DEPTH</b>
<b>C</b>	<b>100</b>
<b>D</b>	<b>A + 150</b>

### Typical Drawing of Wall Mounting Handstop Complete with Top Seal

